

ING550

Reliable and efficient



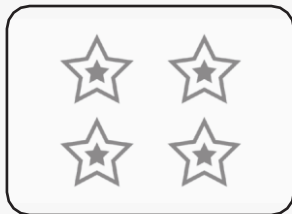
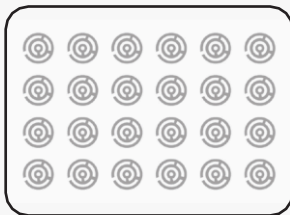
MAGICARD[®] ING 550

The state-of-the-art Magicard ING550 is a robust and powerful way to create secure ID cards.

Key features

Digital shredding – Once data has been used in a print job, it is fragmented, rendering irrecoverable, helping to ensure the Magicard ING550 is not a repository for data.

Enhanced security – The Magicard ING550 has the ability to print an anti-fraud HoloKote[®] watermark on every card. It also has the ability to receive up to four anti-fraud customised HoloKotes[®] direct to the printer via Magicard's web tool.



ING 550

Superior quality – The Magicard ING550 has a wide colour spectrum making each print vibrant and colour-rich – perfect for photographs on ING550 cards and a more accurate depiction of corporate logos and other images. There is also an option to upgrade the Magicard ING550's print quality to 600 dpi resin only.

Easy set-up – The Magicard ING550 integrates with an existing network infrastructure, reducing the set-up time and means little technical knowledge is required.

Reduced intervention – The Magicard ING550 boasts a high level of durability so the risk of failure and requirements for human intervention is greatly reduced.

Efficient printing – Each full colour card, with HoloKote[®] can be printed in under 23 seconds and less than six seconds for resin-only.

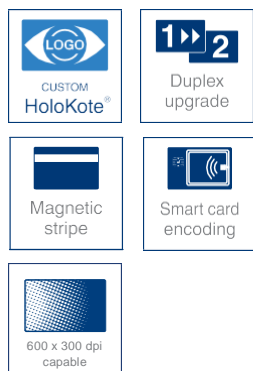
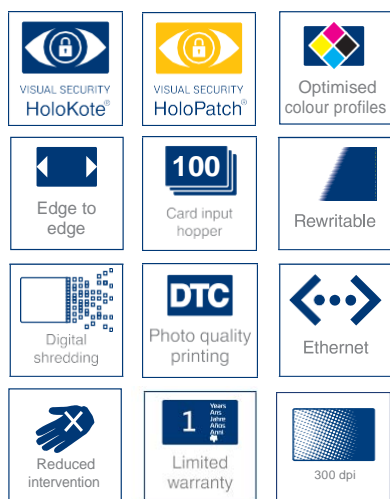
Updates and upgrades – Magicard's robust update process allows for updates to be applied to each printer as and when they are available. Upgrades are delivered electronically to the printer via Magicard's electronic upgrade web tool.



Control the Magicard ING550 from the web browser on a phone, tablet or desktop with CLIX. Users can send a test print card, switch to hand-feed mode, set cleaning reminder preferences and be alerted when the dye-film is running low all



**The Magicard ING550 is an intelligent identity solution for:
Education, governments, facilities, enterprise and payment applications.**



HoloKote®

A standard security watermark printed across the entire card surface. The Magicard ING550 HoloKote® features 4 standard designs.



Custom HoloKote®

A fully flexible and customisable secure watermark printed across



Custom HoloPatch®

HoloPatch® cards have a highly reflective gold 'super diffuser' foil square that enhances the visibility of the overprinted



Printer specifications

| Print speed | |
|--|---|
| Single sided full panel colour film: | up to 23 seconds per card / 156 cards per hour |
| Single sided half panel colour film: | up to 20 seconds per card / 180 cards per hour |
| Single sided monochrome film: | up to 6 seconds per card / 620 cards per hour (Print speeds depend on print design and printing conditions.) |
| Card capacities | |
| Card input: | 100 |
| Card output: | 70 |
| Visual security | |
| HoloKote®: | 4 standard designs |
| Custom HoloKote®: | (Optional) |
| HoloPatch®: | (Optional) |
| Encoding security options | |
| Magnetic stripe encoding: HiCo and LoCo ISO 7811, JIS2. | |
| Smart card encoding: Contact chip, MIFARE®, DESFire® and iClass®. | |
| Others available. | |
| Warranty** | |
| 1 years MagiCover Limited Warranty | |
| Additional 1 year warranty extension - to be purchased at the time of printer sale. | |
| Print technology | |
| Colour dye sublimation, monochrome thermal printing and rewritable technology. | |
| Feed System | |
| Manual/Automatic | |
| Card Thickness | |
| 0.50mm to 1.27mm (20mil to 50mil) | |
| Connectivity | |
| High Speed USB 2.0, USB 3.0 compatible – Type B, 10/100 Ethernet. | |
| External Host USB Port. | |
| Driver compatibility | |
| Win 10 / Win 8.1 / Win 8 / Win 7 (SP1), both 32/64 bit - Windows server 2016 (64bit) / 2012 (64 bit) / 2008 R2 (SP1) (64 bit) / 2003 R2 (SP2) (32 bit) | |
| Mac OS X 10.9.0 upwards (Mojave OS) | |
| Linux with CUPS support. | |
| Dimensions (including feeder and stacker) | |
| 210mm W x 251mm H x 386mm D | |
| 8.3" W x 9.9" H x 15.2" D | |
| Weight (including feeder and stacker) | |
| 4.75kg / 10.5lb | |
| Operating environment | |
| Office 10°C to 30°C / 50°F to 85°F | |
| Power source | |
| External power supply 100-240V 50-60Hz autoranging. | |

**Warranty subject to the observance of specific conditions of use and maintenance, as well as the use of certified 'Original MagiCard' dye films.

Variants

| | Part No. |
|-------------------------------|-------------|
| MagiCard ING550 | 4500-0001/4 |
| MagiCard ING550 Uno Mag | 4500-0002/4 |
| MagiCard ING550 Uno Smart | 4500-0003/4 |
| MagiCard ING550 Uno Mag Smart | 4500-0004/4 |
| MagiCard ING550 Duo | 4500-0021/4 |
| MagiCard ING550 Duo Mag | 4500-0022/4 |
| MagiCard ING550 Duo Smart | 4500-0023/4 |
| MagiCard ING550 Duo Mag Smart | 4500-0024/4 |

Consumables

| | Part No. |
|--|-------------------------------|
| Dye film | |
| MagiCard ING550 YMCKOK dye film | 250 images VI250YMCKOK/4 |
| MagiCard ING550 YMCKOKO dye film with half panel | 250 images VI 250YMCKOKO-HF/4 |
| MagiCard ING550 YMCKO dye film | 300 images VI 300YMCKO/4 |
| MagiCard ING550 YMCKO dye film with half panel | 450 images VI 450YMCKO-HALF/4 |
| MagiCard ING550 KO film | 600 images VI 600KO/4 |
| MagiCard Monochrome Black Film | 1000 images VI 1000K-BLACK |
| MagiCard Monochrome Blue Film | 1000 images VI 1000K-BLUE |
| MagiCard Monochrome Gold Film | 1000 images VI 1000K-GOLD |
| MagiCard Monochrome Green Film | 1000 images VI 1000K-GREEN |
| MagiCard Monochrome Red Film | 1000 images VI 1000K-RED |
| MagiCard Monochrome Scratch Film | 1000 images VI 1000K-SCRATCH |
| MagiCard Monochrome Silver Film | 1000 images VI 1000K-SILVER |
| MagiCard Monochrome White Film | 1000 images VI 1000K-WHITE |
| Cards | |
| ISO CR80 MagiCard plain white PVC cards | M9006-793 |
| ISO CR80 MagiCard plain white PVC cards with magnetic stripe | M9006-794 |
| ISO CR80 MagiCard gold HoloPatch® cards | M9006-796 |
| ISO CR80 MagiCard gold HoloPatch® cards with magnetic stripe | M9006-797 |
| ISO CR80 PVC+RW MagiCard rewritable card front & PVC back (blue) | E9323 |
| ISO CR80 S/A MagiCard self-adhesive cards | M9007-011 |
| Cleaning supplies | |
| Cleaning kit - 5 cleaning cards, 1 pen. | 3633-0053 |
| Cleaning roller kit - 5 cleaning rollers, 1 metal roller bar. | 3633-0054 |

Online upgrades

| | |
|--|------------|
| Electronic duplex upgrade | 4500-0052E |
| Electronic Custom HoloKote® | R0058 |
| Repeat Electronic Custom HoloKote® upgrade | R0059 |

MagiCard is a registered trademark of MagiCard Ltd. All other trademarks, brand names, or product names belong to their respective holders.

The information contained in this document reflects the current state of design and we reserve the right to change the specification without notice or obligation.